

# Tru-Brix Collection

The Tru-Brix Thin Brick façade system is a modern interpretation of a classic look utilizing eye catching finishes to create uniquely styled buildings. The Tru-Brix System can be incorporated into virtually any wall system ranging from light commercial metal stud walls to Insulated Metal Panels, to Curtain wall systems, to prefabricated walls. The Tru-Brix tile are made from real brick manufactured by Glen-Gery brick for this reason the wide range of colors and textures that are available in addition to the ability to match custom colors is amazing. We specialize in doing the difficult features, shapes and designs that are not possible with other thin brick methods. When combined with the strength of the components and these components being attached mechanically, Tru-Brix is more versatile and stronger than any other method of applying thin brick to virtually any structure

## Tru-brix with various wall systems.



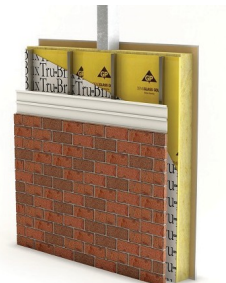
2x4 Stud Wall



CMU Wall



Metal Stud Wall



Pre-Fabricated Wall



Insulated Metal Panel (IMP)

## Technical Data

Weight	11.5 PSF
Brick Sizes	2-3/4" (Oversize) Rails: 5 Courses = 16 Inches Adjusts up to: 5 Courses = 16-5/8 Inches 2-1/4" (Modular) Rails: 3 Courses = 8 Inches Adjusts up to: 3 Courses = 8-3/8 Inches
Brick Coursing	2-3/4" (Oversize) Rails: 5 Courses = 16 Inches Adjusts up to: 5 Courses = 16-5/8 Inches 2-1/4" (Modular) Rails: 3 Courses = 8 Inches Adjusts up to: 3 Courses = 8-3/8 Inches
Brick Specifications	<b>ASTM C216</b> Face Brick Grade SW (Severe Weathering) <b>ASTM C1088</b> Thin Brick Grade Exterior (Severe Weathering)
Mortar	<b>ASTM C270</b> Polymer modified mortar for work-ability and durability. <b>ASTM C144</b> sand is included in the 80lb. bags.
Steel Holding Rails	0.027" HDG, Commercial CS Type B, Non-Chemical Treated, Minimum Spangle, Smooth, Cold Roll Formed G-90 Galvanizing. 50-Year Proprietary protective coating
Anchors	Type 1: #10 Polymer coated Wood Screws 1" to 2-1/2" Type 2: Self-tapping Polymer coated Metal screws 1" to 1-1/2" Type 3: Concrete and Masonry Screws 1" to 2-1/2" Type 4: RSS-approved anchors for special applications
Building Wrap	Vapor permeability 10 perms per ASTM E96 Procedure A. Vapor transmission 73 g/m <sup>2</sup> /24hrs per ASTM E96 Procedure A/B Air Leakage/Resistance 0.03 cfm/ft <sup>2</sup> @ 75Pa Water resistance > 60 minutes per ASTM D779 Water Resistance "Pass" per ASTM E331 Fire ratings; Flame Spread < 25FSI and Smoke ASTM E84
Flashing	Self-adhesive PVC 20 mil
Fire Rating	Adds only Non-combustible materials to rated walls (See Building Wrap)