

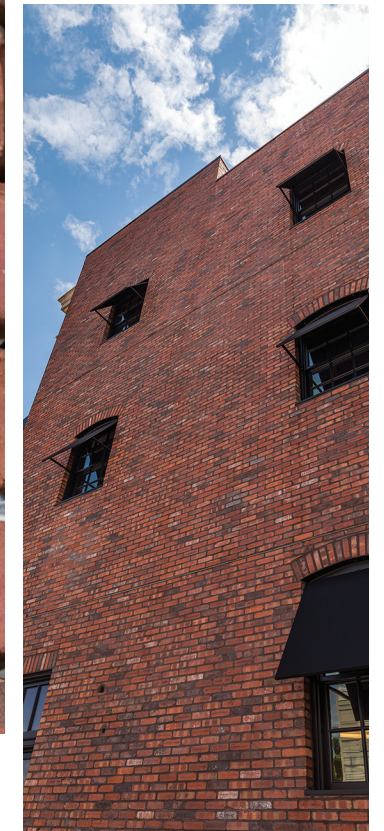
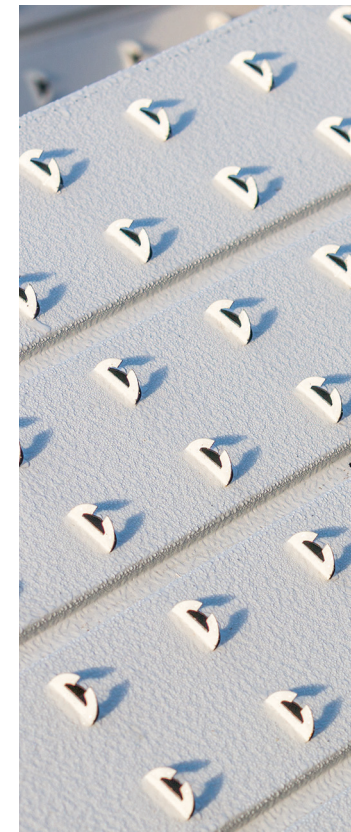


All the ways thin wins.

INSTALLED WITH **THIN TECH**®

The most advanced thin veneer
masonry support system ever designed.





Expand any design with Thin Tech®.

Leading the way in thin masonry technology.

Glen-Gery Thin Tech® is a mechanical support and spacing panel for thin masonry veneers. The most advanced thin veneer panel system ever designed. Each thin brick, tile or stone is supported by our patented support ties that mechanically interlock the masonry veneer to the panel.



The ideal solution
for siding
replacement.



Real Brick. Revolutionary System.

Glen-Gery's Thin Tech system offers two innovative panel options to meet your project needs. Both options deliver the timeless beauty of real brick with a lightweight, efficient system for residential and commercial applications.



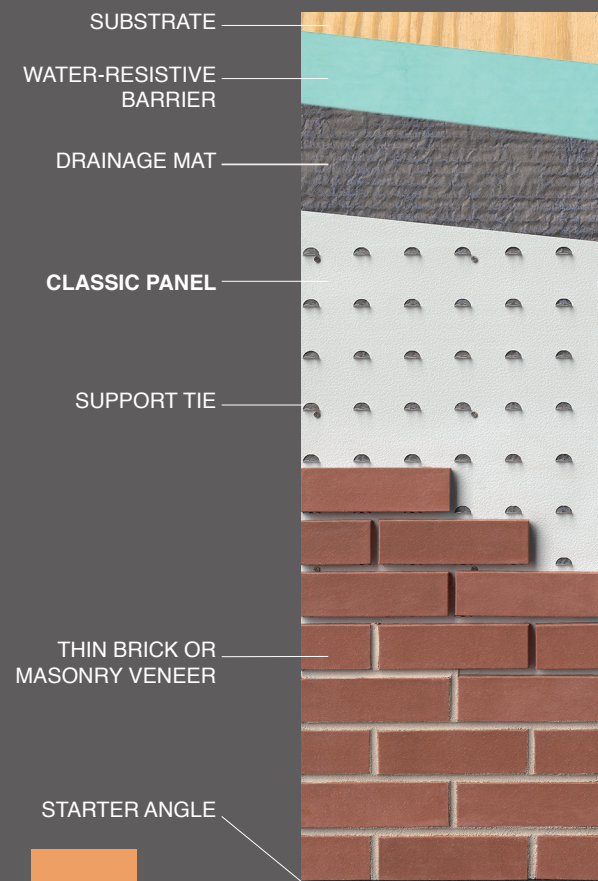
Ideal for all
applications.



Innovative Panel Options

Thin Tech Classic Panel

Thin Tech Classic offers the thinnest, most resilient masonry veneer support structure specifically designed to accommodate thin brick. The Classic series works in conjunction with traditional mortar to secure the veneer.



Thin Tech Elite Panel

Thin Tech Elite is the most advanced masonry support system ever designed. It features all the advantages of the Classic series, but with enhanced product performance: superior drainage, ventilation, pressure equalization and strength.



Why Thin Tech®?

Experience Thin Tech, Glen-Gery's innovative and high-performance masonry support system designed for superior strength, durability, and ease of installation. Whether for residential or commercial projects, Thin Tech delivers the timeless beauty of real brick with a lightweight, cost-effective, and versatile solution.

Simple support

No relief angles or foundations needed for support. Panels are attached with screw fasteners provided by Glen-Gery.

Continuous insulation compatible

Thin Tech can be fastened to various rainscreen cladding supports, accommodating mineral wool insulation and fasteners are available in lengths to attach through up to 3" of rigid foam insulation.

Superior drainage and drying

The 3/8" space created by the channels of Thin Tech Elite panel can eliminate the need for a second layer of WRB. Alternately, a drainage mat can be used with Thin Tech Classic panels.

Mechanically secures most thin veneer types

Patented angled support ties mechanically bond each unit to the panel through the mortar joint, without any additional action required by the installer and no need for special slotted units, or special back surface texture such as keyed or dovetail backs.

Performance verified

Available reports include water penetration resistance (ASTM E331), structural performance (wind load deflection ASTM E330), shear bond strength (ASTM C297), fastener pull through, fastener withdrawal (ASTM D1037), and corrosion resistance (salt spray, ASTM B117) and other data. NFPA 285 compliant.

More size options

Standard Thin Tech panels can accommodate a variety of masonry unit thicknesses from 1/2" to 1-1/4" and heights from 2-1/4" to 11-5/8". Panels for unit heights up to 24" are available as special order for limited applications.



Features + Benefits.

Glen-Gery is the only brick manufacturer to produce a thin veneer metal panel system for brick and stone that is suitable for exterior and interior usage. Offered in the traditional Classic and high-performance Elite series, each are tailored to the needs of specific applications.

Glen-Gery Thin Tech products are offered with extended warranties lasting up to fifty years.

Patented support tie configuration placed on a 76 degree angle

- Allows the mortar to surround the support tie creating a positive masonry lock between the brick mortar and panel



Stucco embossed texture

- Provides a built-in weep system on both sides of panel for moisture control
- Creates greater surface area for maximum adhesion between veneer and panel

26-gauge architectural grade steel

- High fastener pull-through strength for panel support and integrity
- Hardened steel sheets help brace wall, minimizing wall racking
- Allows fastening anywhere through the panel for even weight distribution or loading on the wall, using industry standard fasteners
- Protected by a zinc coating plus a thermoset coating

Thin Tech solves the weather problem

Wind is one of the main contributing forces causing rain penetration in a building. When wind blows against the face of a building, it forces water through even the smallest opening.

A wall utilizing rain screen technology is designed to inhibit capillary action and moisture bridging as well as promote drying and drainage of moisture.

The Thin Tech Elite system allows air to enter the airflow chambers through weep vents, enabling air exchange and pressure moderation, reducing the potential for pressure-induced water penetration.

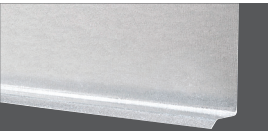


Product	Size	Weight	Packaging	Coverage (Approximate)
Thin Tech support tie ledge panel* (Classic or Elite)	48" x 48" (nominal)	16 lbs. each	As needed	16 sq. ft./panel
Thin Tech corner support	48" x 6" x 6" (nominal)	3.5 lbs. each	As needed	4 linear ft./piece
Thin Tech shim	4' lengths	.4 lbs. each	As needed	4 linear ft./piece
Starter angle	10' lengths	2.3 lbs. each	As needed	10 linear ft./piece
Thin Tech air vent	4' lengths	0.1 lbs. each	As needed	4 linear ft./piece
Brick adhesive**	28 oz. tube	3 lbs./tube	12 tubes/case	15 sq. ft./tube***
Brick adhesive**	20 oz sausage	4 lbs./sausage	20 sausages/case	21 sq. ft./sausage***
Stone adhesive	10 oz. tube	2 lbs./tube	24 tubes/case	20 lin. ft./tube
Stone primer	30 oz.	2 lbs.	As needed	200 sq. ft.
Drainage mat (1/4"/6mm)	39" x 61.5'	14 lbs.	As needed	200 sq. ft./roll
PCL mortar (unsanded)	1 cu. ft.	72 lbs.	As needed	72 sq. ft****
Polymer modified mortar	.375 cu. ft.	50 lbs.	As needed	27 sq. ft****
1-1/2" pan head square drive screw for steel	#10 x 1-1/2"	17 lbs.	1,700/box	1,079 sq. ft./box
2-1/2" pan head square drive screw for steel	#10 x 2-1/2"	25 lbs.	1,700/box	1,079 sq. ft./box
3-1/2" pan head square drive screw for steel	#10 x 3-1/2"	16 lbs.	850/box	540 sq. ft./box
4-3/4" pan head square drive screw for steel	#10 x 4-3/4"	14 lbs.	425/box	270 sq. ft./box
5-3/4" pan head square drive screw for steel	#10 x 5-3/4"	14 lbs.	425/box	270 sq. ft./box
1-1/2" pan head square drive screw for wood & concrete	3/16" x 1-1/2"	22.5 lbs.	1,700/box	1,700 sq. ft./box
2-1/4" pan head square drive screw for wood & concrete	3/16" x 2-1/4"	23 lbs.	1,700/box	1,079 sq. ft./box
3-1/4" pan head square drive screw for wood & concrete	3/16" x 3-1/4"	16 lbs.	850/box	850 sq. ft./box
4-1/4" pan head square drive screw for wood & concrete	3/16" x 4-1/4"	14 lbs.	425/box	270 sq. ft./box
5-1/2" pan head square drive screw for wood & concrete	3/16" x 5-1/2"	14 lbs.	425/box	270 sq. ft./box

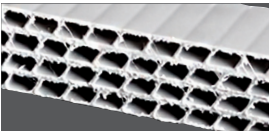
*Support tie spacing in following sizes: brick – 2-5/8", 3.2", 4"; stone – 8", 12", 16", 24". Available support tie sizes: 3/8" (standard), 5/8" **Subject to availability ***Corner brick will require 50% more adhesive ****Coverage will vary depending on masonry unit type and size.

Thin Tech accessories

Glen-Gery continues to lead the way in thin masonry support technology by stocking a full line of high-quality accessories. These accessories are recommended for the Elite and Classic Series panel systems and available through our authorized Thin Tech distribution network.



Starter angle



Air vent



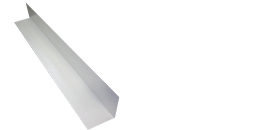
Thin Tech shim



Adhesive



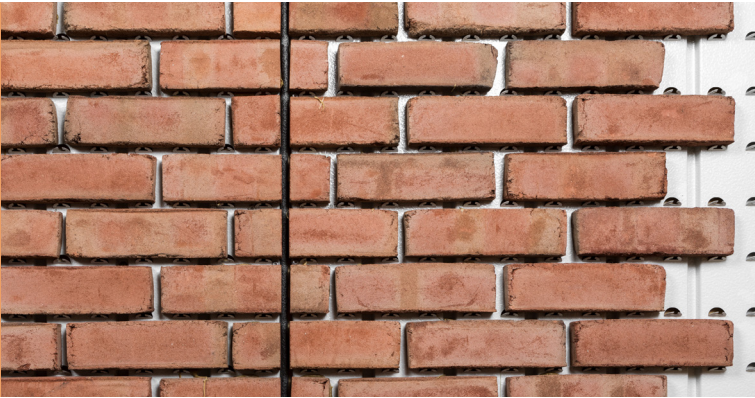
Water-resistive barrier and drainage mat



Corner support



Easy installation, exceptional strength.





Discover the possibilities at [glengery.com](https://www.glengery.com)

A BRAND OF

BRICKWORKS

Due to printing limitations, color and texture may vary from actual product. Final selection should always be based on an actual product sample. For more information, contact your Glen-Gery representative. © 2025 Glen-Gery Corporation • 3/25