



Architect Shapes Collaboration



OVERVIEW

Welcome to Glen-Gery's inaugural architect collaboration program. Please submit your own custom brick shape design for a chance to be selected as an honorary member of the Glen-Gery Research and Development Team.

At the conclusion of the contest, six winners will be selected and be invited to tour Glen-Gery's flagship molded brick factory for a tour and an opportunity to become a brick artisan for a day, molding your winning custom shape.

CONTEST RULES

Shape + Size restrictions:

- The shape design must be a single unit
- Total size must be between 30 and 330 square inches
- No smaller than 3 5/8" x 3 5/8" x 2 1/4"
- No larger than 11" x 11" x 2 3/4"
- No intricate carved details
- Must be stackable (1 to 2 flat surfaces)

Files required (2):

- **SHAPE DRAWING** (.pdf .jpg .jpeg or .png)
One (1) Profile/Side View of the individual shape
optional: include top view + isometric drawing (can be hand drawn)
- **APPLICATION DRAWING** (.pdf .jpg .jpeg or .png)
One (1) 2D Section + Elevation of shape in application on a facade
alternative: 3D view (can be hand drawn) Scale: 1-1/2" = 1'-0"

See examples of acceptable drawings on page 2.

TIMELINE

Submission Deadline:

- Sunday, June 16, 2024
- Submissions only accepted at www.glengery.com/shape-collaboration-entry

Shortlist Announced:

- Monday, June 24, 2024
- Notification via email + social media

Voting Period:

- Tuesday, June 25, 2024 - Sunday, July 7, 2024
- Notification via email + social media

Winners Announced:

- Week of Monday, July 8, 2024
- Notification via email + social media

Factory Tour:

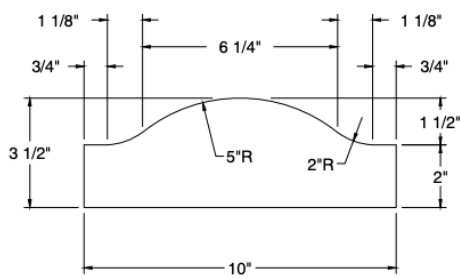
- Date to be selected in September/October 2024

EXAMPLES OF ACCEPTABLE DRAWINGS

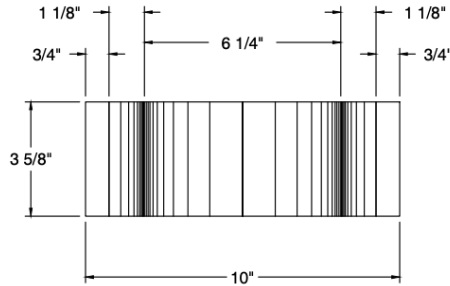
SHAPE DRAWING (.pdf .jpg .jpeg or .png)

Profile/Side View of the individual shape

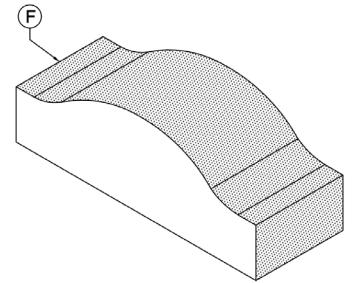
optional: include top view + isometric drawing (can be hand drawn)



Profile/Side View



Top View
(optional)

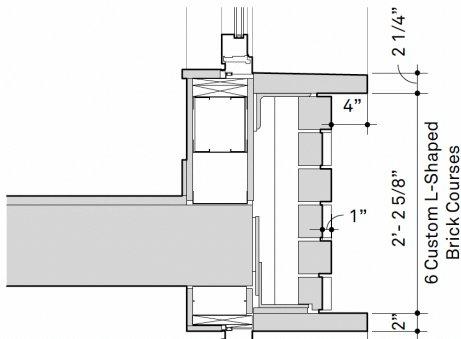


Isometric View
(optional)

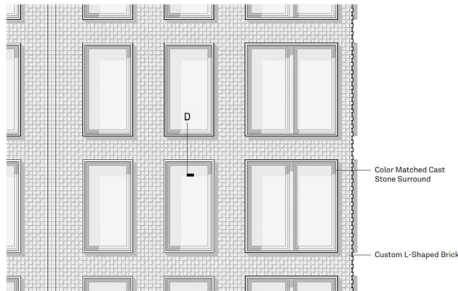
APPLICATION DRAWING

2D Section + Elevation of shape in application on a facade

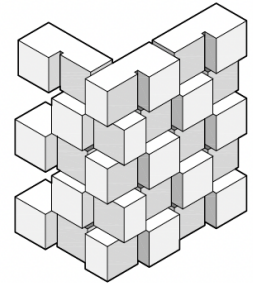
alternative: 3D view (can be hand drawn)



Section



Elevation



3D
(optional)

SUBMISSIONS

Please submit drawings by Sunday, June 16, 2024 at www.glengery.com/shape-collaboration-entry

QUESTIONS?

Email denise.smith@glengery.com with any questions or concerns.

OFFICIAL TERMS + CONDITIONS

The fine print:

This contest is facilitated by Glen-Gery Corporation ("Glen-Gery"). Glen-Gery can be contacted by mail at 1166 Spring Street, Wyomissing, PA 19610, by phone at 484.334.8827, or by e-mail at info@glen-gery.com. This contest shall be referred to as the "Special Shapes Contest" or, hereinafter, as the "Contest".

Participants will have the opportunity to submit the design of a special shape to be made at Glen-Gery's Mid-Atlantic Plant. By submitting a special shape to be considered as part of the Contest, the Participant acknowledges and agrees that he/she has read these Terms and Conditions and that he/she agrees to these Terms and Conditions.

Glen-Gery will award 6 (six) winners at the end of the Contest period. The Contest period ends on Sunday, June 16, 2024. Out of all of the submissions, Glen-Gery will confirm that the submission complies with the design parameters set forth below and thereafter, the submission will be published on a Glen-Gery website where persons can vote on their favorite submission. The submissions with the most votes will be deemed the winners.

Glen-Gery reserves the right at its sole discretion to suspend, modify, extend, or terminate this Contest without notice at any time. The winner will be notified by either email or phone between Monday, July 8, 2024 and Friday, July 12, 2024.

The winning Participants will receive the opportunity to come to Glen-Gery's Mid-Atlantic Plant with a colleague for a guided factory tour and a chance to hand mold their very own Special Shape creation. While at the Plant, the winning Participants will participate in photos and videos for the preparation of promotional materials, including a press release. The winners will also be permitted to propose a name for their Special Shape.

The winning Participants shall not transfer or assign any of the rights or benefits of the Contest. Any expenses not specifically provided for under these terms are the sole responsibility of the winning Participants. No purchase is necessary to participate in this Contest. A purchase of any Glen-Gery products will not improve the chances of winning. Void where prohibited by law, rule or regulation. By entering this Glen-Gery Contest, the Participants hereby understand that Glen-Gery will provide information to the contestant by email.

Participants may enter this Contest by submitting an entry online at www.glen-gery.com/shape-collaboration-entry. No more than one entry per one person is allowed. Each entry must have a unique email and phone number submitted onto form. Glen-Gery is not responsible for any illegible, incorrect, or late entries. The email address listed on each entry form must be the address where the winning Participant is to be notified that they have been selected as a winner.

Employees, officers and directors of Glen-Gery, its affiliates, subsidiaries, co-branded partners, consultants, contractors, advertising, public relations, promotion, fulfillment and marketing agencies, their immediate families (and those living in their same households) are not eligible to participate in this Contest.

By submitting a Special Shape as part of this Contest, the Participant hereby waives all claims to any intellectual property rights in the Special Shape and consents to the assignment and transfer of said rights to Glen-Gery. After submission of a Special Shape, the Participant grants and assigns all property rights and claims to the same to Glen-Gery including any patent, patent application, copyright, trademark, know-how, trade secret or other property rights that the Participant may have in the Special Shape. The Participant further represents and warrants that, to the knowledge of Participant, the Special Shape does not infringe on any of said rights and the Participant will indemnify Glen-Gery or its affiliates for any infringement claims brought by any third parties related to the same.

In addition, the Participant's submission and participation in this Contest includes specific authorization to Glen-Gery, and its affiliates or assigns, to issue a press release or make any other public statements or otherwise communicate with media (including but not limited to social media posts, photographs, or videos) concerning the Contest, the Participant, and the Special Shape submitted by the Participant without compensation.

Submissions that are lost, late, illegible or incomplete for any reason will not be eligible. Glen-Gery reserves the right to modify or terminate this Contest at any time or disqualify any entry in good faith.

By participating in this Contest, Participants agree to release, discharge and hold harmless Glen-Gery, its affiliates, co-branded partners, subsidiaries, retailers, agencies and their respective officers, directors, employees and agents, from any damages which may arise out of participation in this Contest in any way or out of the acceptance, use, misuse or possession of a prize or award.

Additional Requirements:

- The Mid-Atlantic Plant must first confirm that it can make the Special Shape in order for it to be considered for vote.
 - Follow size requirements on page 1.
- Glen-Gery will select 12 Special Shape submissions in its sole and absolute discretion.
- Votes will be cast for the 12 Special Shape submissions.
- Glen-Gery will feature the top 6 (six) Special Shape submissions based on the total votes submitted subject to Glen-Gery's sole and absolute discretion.
- The top six (6) Special Shapes with the most votes will be determined the winners.
- The winning Special Shapes will be displayed at Glen-Gery's Design Studios.
- The Participants shall have the opportunity to name the Special Shape but disclaims any rights or interest in the Special Shape or its name.
- Any mold box created to manufacture and produce the Special Shape shall be the property of Glen-Gery.
- Any manufacture, production and sale of any of the submitted Special Shape(s) shall be Glen-Gery's and not a Participant's and Glen-Gery shall maintain the exclusive rights to manufacture and produce said shape.