

GLEN-GERY  
DRAINAGE MAT

AIR/WATER RESISTIVE  
BARRIER AS REQUIRED

FLASHING MEMBRANE/  
TRANSITION TAPE

CLASSIC PANEL

WEEP HOLES  
MAX 24" ON CENTER

STARTER ANGLE  
FASTENED TO  
SUBSTRATE

OPENING & OR THICKNESS  
OF MOVEMENT JOINT  
TO BE DETERMINED BY  
ARCHITECT OR ENGINEER

MOVEMENT JOINT (TYP)\*

SUBSTRATE

WALL CONSTRUCTION

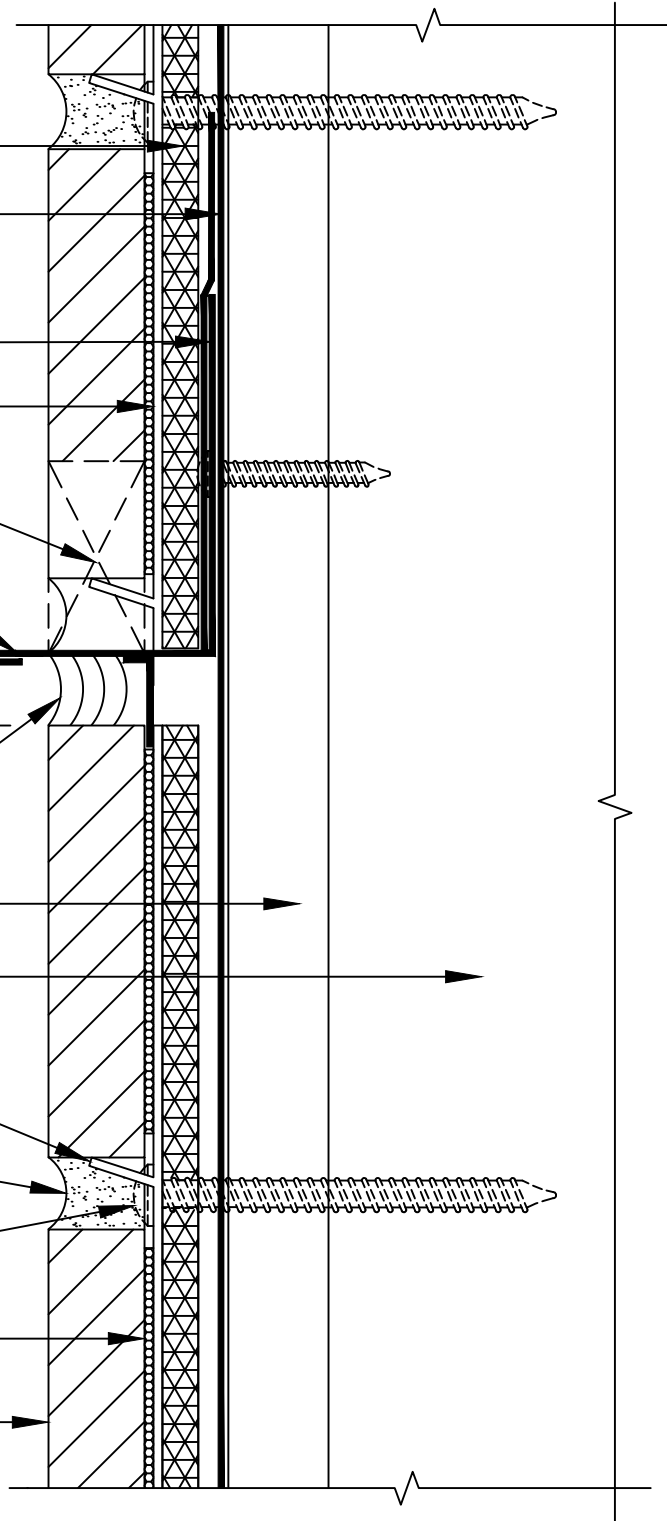
SUPPORT TIE

MORTAR

CORROSION RESISTANT  
FASTENER

ADHESIVE

MASONRY VENEER



## HORIZONTAL MOVEMENT JOINT DETAIL (ALTERNATE)

CLASSIC

NOTE: FASTENER PENETRATION - WOOD STUD- 1 1/4" MIN., STEEL STUD - 3 THREADS MIN., CONCRETE - 1" MIN.

\*USE BACKER ROD WHERE JOINT DEPTH > 3/4"