

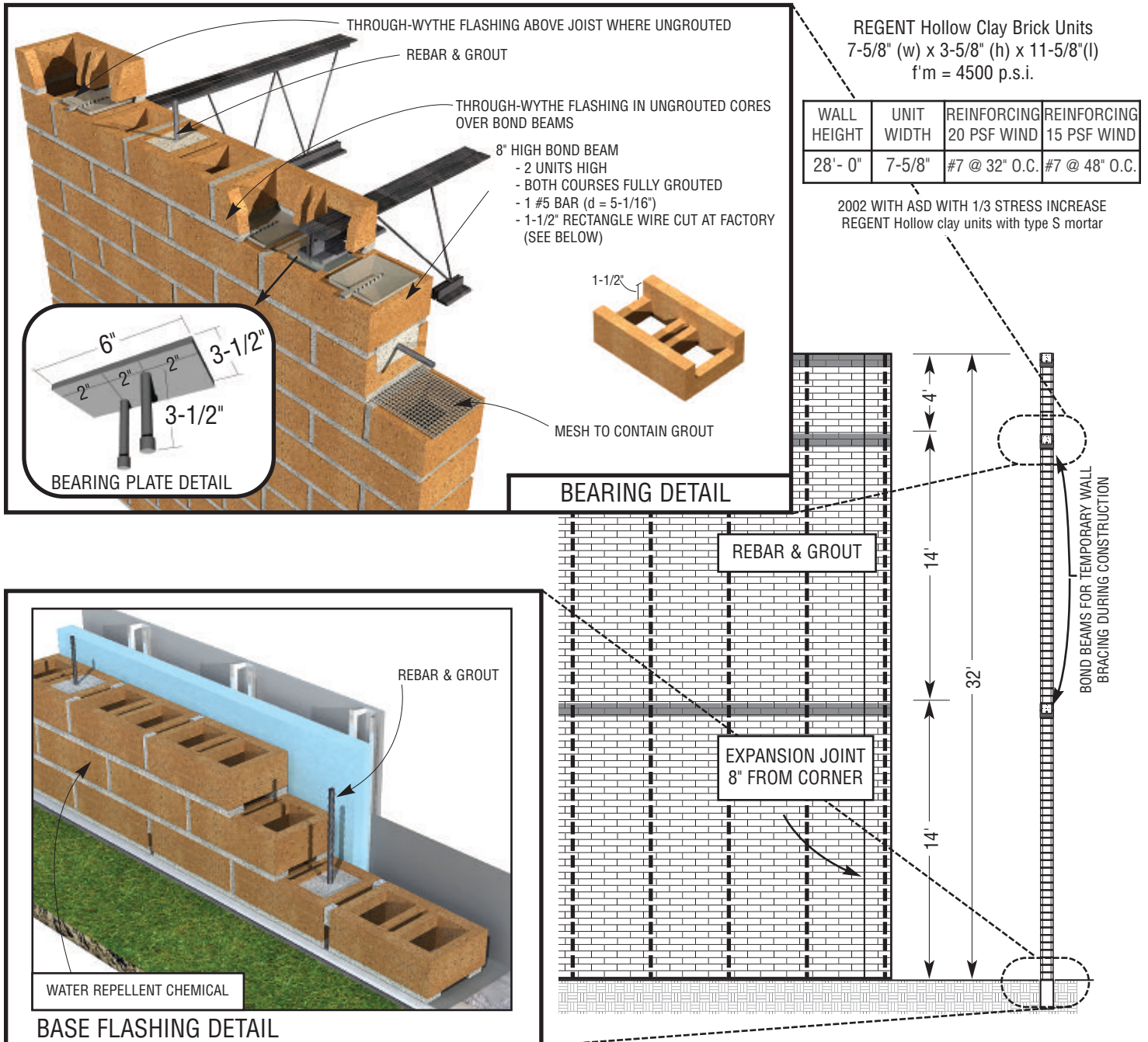


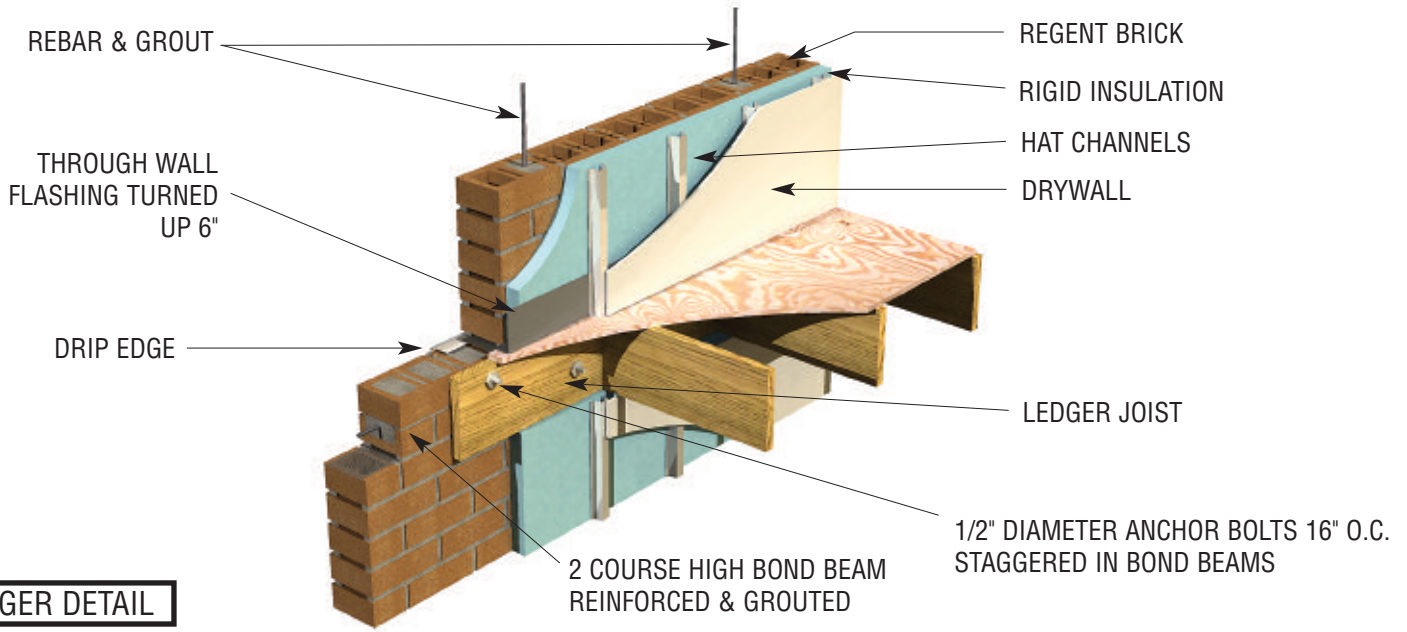
Glen-Gery Regent Bricks

HOLLOW CLAY BRICK UNITS AND WALL DESIGN

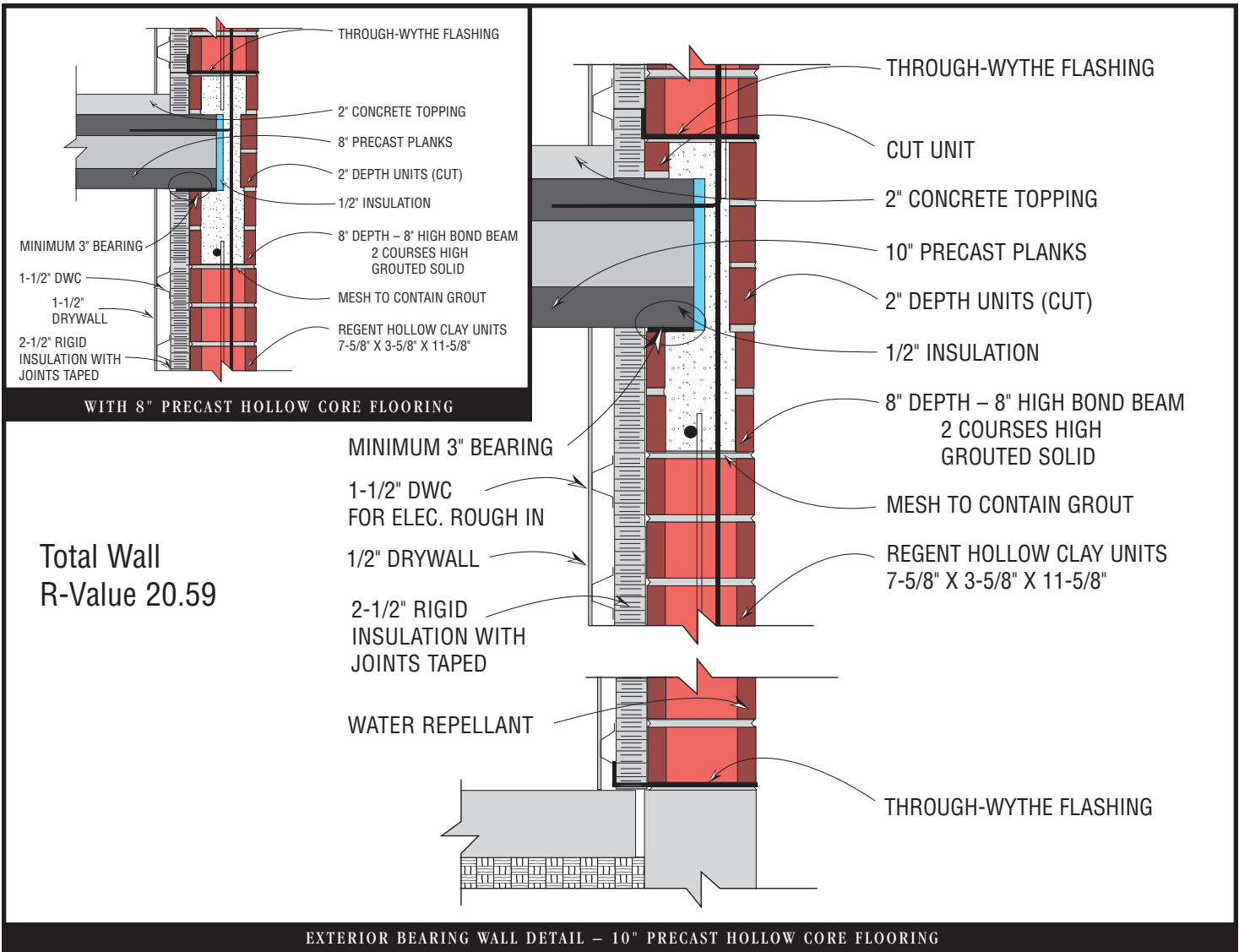
Tall, slender structural single wythe walls for commercial, educational, institutional and multi-family residential applications

- Exceptional structural and veneer building solution
- Units can be insulated and grouted
- Faster masonry construction
- Exceeds industry standards
- Inviting textures and dramatic colors
- Beautiful appearance and structural integrity





LEDGER DETAIL



Total Wall
R-Value 20.59

Features

Lower construction costs.
The masonry walls are the structure and the structure is the exterior finish. No steel or concrete frames and no separate cladding. One trade. No delays for the design of steel and concrete connections.

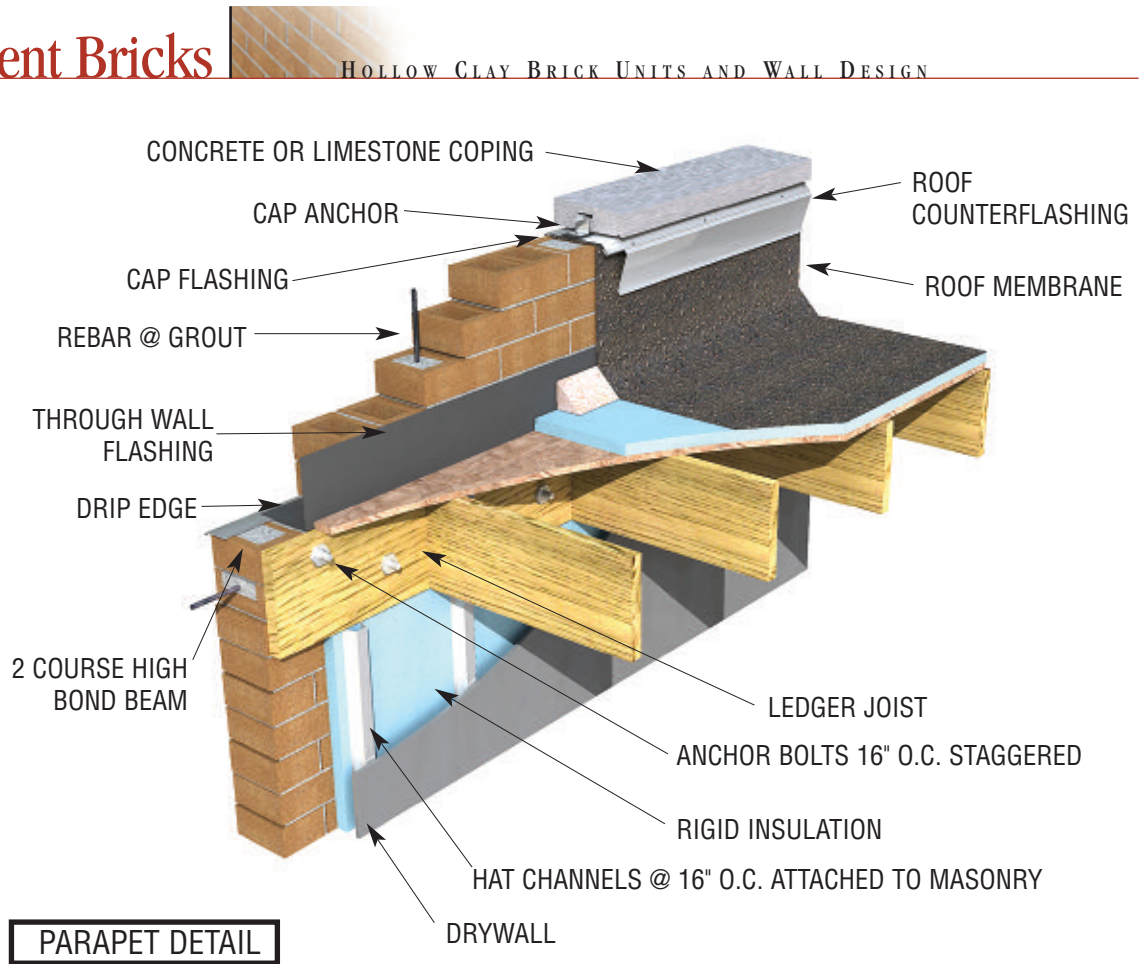
Interesting, durable, colors—clay colors do not fade.
Over time, acid rains erode the cement paste and pigments of concrete masonry units. This erosion exposes the colors of the aggregates, muting the basic color of the concrete masonry units. Acid rain DOES NOT affect Regents.

Smaller scale.
Compare Regent brick to larger units which often appear too large for structures and look like colored masonry.

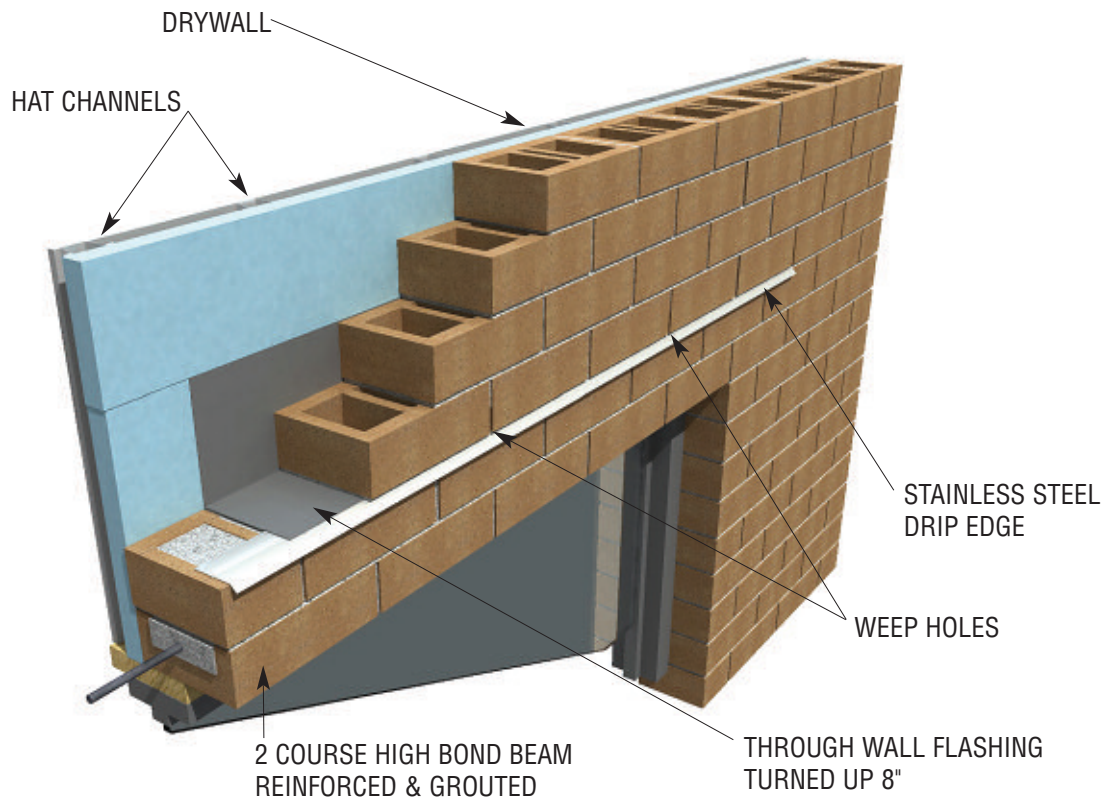
Lower weight.
Regents are less fatiguing to lay. They can also be laid with one hand rather than two for greater productivity and less cost.

Higher compressive strength.
At least 60% greater than a high-strength concrete masonry unit laid in Type "S" mortar. Walls can be taller for a given thickness or thinner for a given height.

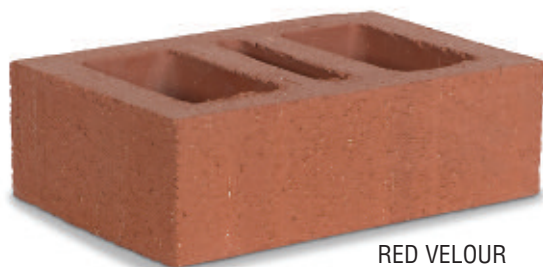
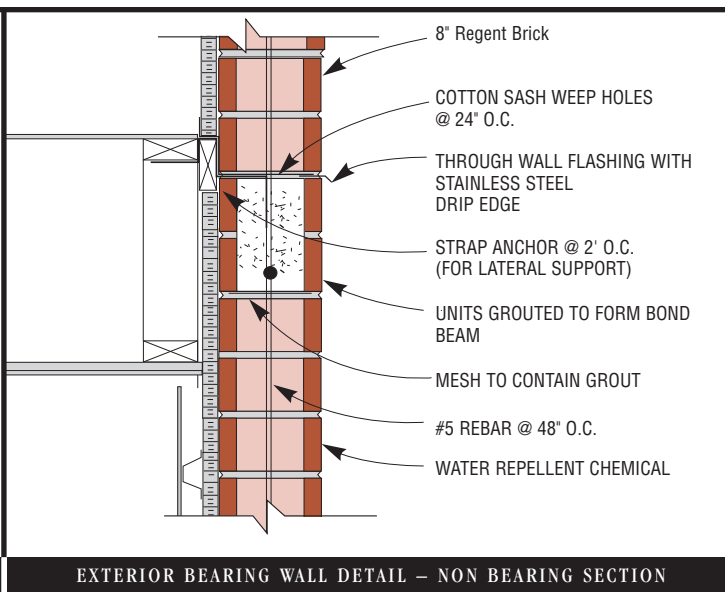
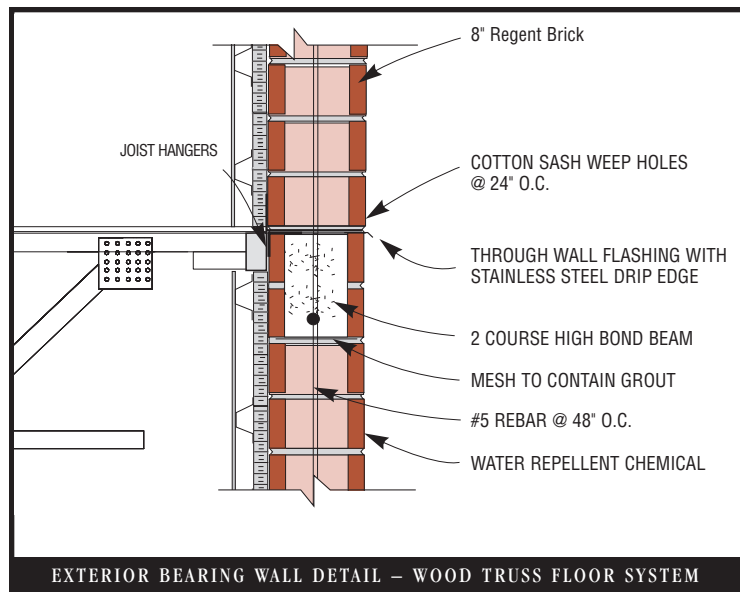
Easy to clean.
Regents are easy to clean with common cleaning chemicals while cleaning concrete masonry units requires a great deal of care, time, special chemicals and extra cost.



PARAPET DETAIL



DOOR OPENING DETAIL



Facts

Glen-Gery Regent-sized clay bricks are 7-5/8" thick x 3-5/8" high x 11-5/8" long.

Stretchers are stocked in four durable, non-fading colors: *Red Velour*, *Saddle Velour*, *Sahara Velour* and *Walnut Velour* from Marseilles. Bond beam units are also available.

All Regents comply with the requirements of ASTM C652, Grade SW, Type HBS, Class H40V (just below 40% void).

The stretchers weight is 15.5 lbs. each. 33 bricks are packaged in each strap and there are three straps of 33 per cube.

Red Velour bricks are cleaned with Diedrich 202; *Sahara Velour*, *Saddle Velour* and *Walnut Velour* bricks with 202V.

DISCLAIMER NOTICE

This guide contains technical information on masonry wall systems. It provides some of the basic information required to properly design and detail these systems. This booklet does not cover all designs or conditions. The information presented illustrates only the principles that are involved. This information should be recognized as suggestions which, if followed with good judgement, should produce positive results. Final decisions on the use of information, details and materials as discussed in this booklet are not within the purview of the Glen-Gery Brick, and must rest with the project designer, owner, or both.